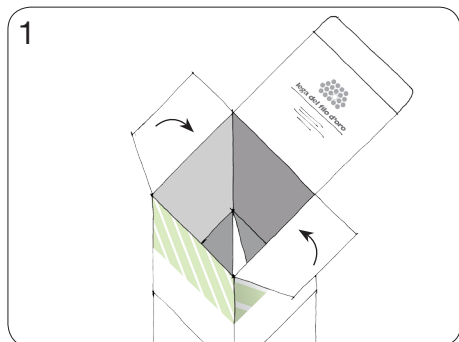
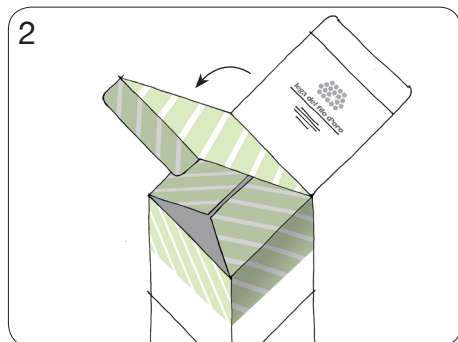


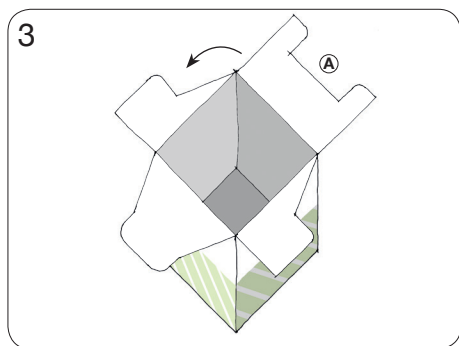
ISTRUZIONI CHIUSURA SCATOLA COLORE PASTELLO



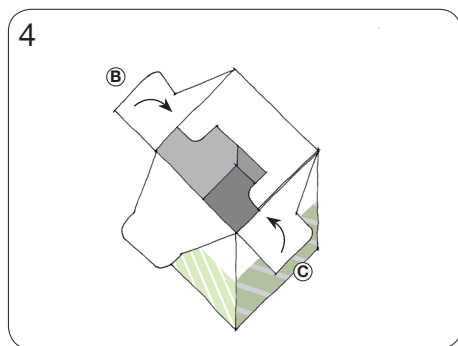
1
Aprire la scatola e piegare i due lembi laterali



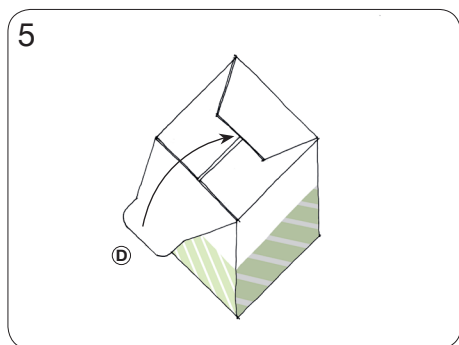
2
Chiudere il coperchio della scatola



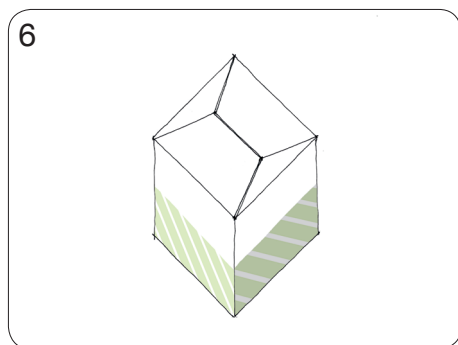
3
Girare la scatola e piegare il lembo A



4
Piegare i lembi laterali B e C



5
Piegare il lembo D e inserirlo nella fessura centrale



6
Il fondo è chiuso perfettamente

